

Pastoral Care

Advice for Health

Reduction of Stress

Intercession

Self Care

Healing

Nurture

Understanding

Reassurance

Support Groups

Education

Spiritual Growth



Parish Nursing
Ministries UK

Parish Nursing Ministries UK is a charitable company formed to develop Parish Nursing in the UK . We offer training, coordination and resources for Parish Nursing ministries.

Company number: 5451295 Charity no:1111680
Registered address 3 Barnwell Close, Dunchurch, Rugby
CV22 6QH

**You can help to make
Parish Nursing become a reality in
more UK churches
and receive updates**

Please send your donation, payable to
"Parish Nursing Ministries UK"
15 Greenway, Braunston, Daventry,
Northants NN11 7HP

If you pay UK tax please help us further by giving us
your name and address and stating that you are a UK
taxpayer and would like all donations gift-aided.

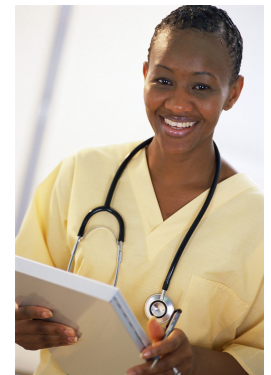
For training and further information on setting
up a project, please see the website:

www.parishnursing.org.uk

or contact Revd. Helen Wordsworth,
UK Coordinator, Tel: 01788 817292
3 Barnwell Close, Dunchurch, Rugby,
CV22 6QH

How can I
combine my
nursing skills
with faith
in a way
that will
bring
wholeness?

?



**Jesus came to bring
life in all its fullness...
life that includes
physical, mental, social
and spiritual wellbeing.**

That means we need to encourage congregations to make the connections between faith and health, between healing and wholeness, between spiritual life and physical activities.

Not just for themselves but for the people who live and work around them.

Are you a currently registered nurse with community experience of some kind?

If so you can help your church to make these connections in their communities.

You could be appointed as a "Parish Nurse" with your ministry team? ('Parish' can also mean community or neighbourhood)

These hours will count towards your practice hours for registration. If there are other health professionals in your church you can invite them to be part of your project.

Training and support are available through



**Parish Nursing
Ministries UK**

www.parishnursing.org.uk

What can a Parish Nurse do?

Visit congregational contacts who have health-related problems, and pray with them as appropriate

Assist the church to offer relevant help at a person's point of need.

Give personal health advice and help someone to get the most appropriate treatment or care

Liaise with the local GP surgery and staff

Encourage the congregation towards more healthy lifestyles

Motivate volunteers and offer training and opportunities for service in the local community

Support and work with those already engaged in pastoral care

Talk to church-based groups about physical and spiritual health issues

Accompany someone to a stressful medical appointment

Make links with other voluntary groups and agencies

Attend and assist with services for healing

Help your minister and leadership team to care for their own health

Work within the
Code of Professional Practice
(Nursing and Midwifery Council)

What will a Parish Nurse not do?

A Parish Nurse will not do dressings, injections, and invasive treatments. If these are needed they are provided by the Practice nurse, or District Nursing service.

S/he will not give advice beyond the competencies for which s/he has been trained

S/he will not put pressure on anyone to change their religion or join a particular church

As a Parish Nurse you may work for any church part-time or full-time, on a paid or voluntary-with-expenses basis. You will have professional and spiritual supervision and be accountable to the NMC and the church. You will also have a network of support through Parish Nursing Ministries UK, which is now providing training, advice and resources to over 40 churches with Parish nurses. You will be linked with over 10,000 Parish nurses around the world

Quote from a nurse:

"At last I've found the kind of work I believe I was really called to. I can give quality time to my patients, pray with them if they request it and use my skills to empower others."